

Assessments



Spelling: Spelling words are located in the daily planner. Your child is responsible for writing them in their student planner weekly. Please practice the words with your child. Spelling checks are given weekly, with a few exceptions. Be sure to check the dates on the spelling list.

Vocabulary Workshop: Vocabulary words are introduced and assessed every two weeks. Words and definitions are found in the green Vocabulary Workshop workbook. They may also be accessed online through Claslink.

Wonders Assessments: Students will be assessed every 6 days on the skills covered in our Wonders Language Arts curriculum. The assessment will include 2 stories with ten questions, along with a written response. This is an independent reading assessment. There are no retests on Wonders assessments. These tests will all be given online.

Math: Mid-Chapter Checkpoints and Chapter Review/Tests will be given as quizzes throughout the chapter. Chapter tests are given at the end of the chapter and will be given online. Check planners daily for dates of upcoming quizzes and chapter tests. Students will be able to retest using Form A if they scored below a 70%. Both tests will be averaged; however, the maximum grade will be 70%.

Social Studies/Science: Social studies and science units will have a study guide sent home with the information students will be assessed on.

Florida Standards Assessment: All third graders will take the English Language Arts and Math assessment in the Spring of 2022.



HOMEWORK



Students are expected to read for 20 minutes nightly as part of their homework. Please make sure your child is reading every night and coming to school prepared to take their A.R. tests.

Any unfinished classwork is considered homework and will be sent home for students to complete at home. It is due the next morning when they arrive.

Students need to be prepared for their weekly spell checks and vocabulary quizzes. It helps to practice for these throughout the week to ensure they understand their words.

For enrichment at home students can use Claslink to access our school Apps for extra practice. They can work in Reflex math, I-ready, Freckle and Connect Ed online to review the week's story and grammar games.

Long-term assignments, such as reports or projects, will be assigned from time to time. Long-term assignments that are turned in late will receive one letter grade reduction for each day late.

BIRTHDAY

Please email me if you would like to send in a special individually wrapped, store bought snack for the class for your child's birthday.

SNACK

We have a daily snack time outside where students can enjoy a healthy snack. They can enjoy a small snack from home. Please send in a healthy treat that will keep their energy up until lunch time. Students may also bring a water bottle to class daily. Please make sure that it has a spout top to avoid spills.

WELCOME to Open House



Mrs. Grauer's
THIRD GRADE
2021-2022

GRADING

Math

Math grades are determined using the following weights:

- Chapter tests-50% of grade
- Quizzes-20% of grade
- Classwork-30% of grade



Language Arts

Language Arts grades are determined using the following weights:

- Tests-50% of grade
- Quizzes/projects- 20% of grade
- Spelling checks-5% of grade
- Class work-25% of grade



Science/Social Studies

Science and Social Studies grades are determined using the following weights:

- Unit tests-50%
- Projects/Quizzes-20%
- Class work-30%



- A: 90% - 100%
- B: 80% - 90%
- C: 70% - 80%
- D: 60%-70%
- F: 60% - 0%



Classlink login information

username: 171_____@edu.leonschools.net

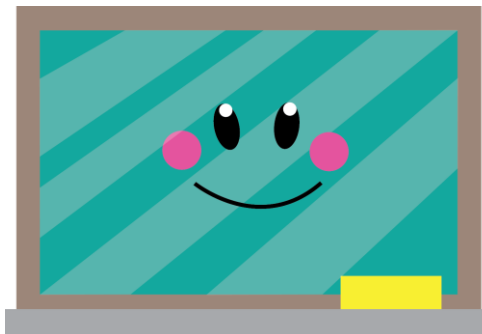
password:

Password is your child's lunch pin

Daily Schedule

- 8:30 School starts
- 8:35 Science / Social Studies
- 9:30 Reading / ELA
- 10:00 Reading Workshop
- 11:00 - 11:30 Intervention / Gifted/ Math groups
- 11:40 - 12:00 Recess
Go Noodle Activity Break
- 12:15 - 1:00 Special Area
Music, PE, Art, Guidance, PE, Media
- 1:06 - 1:31 Lunch
- 1:35 Math
- 2:50 Dismissal

Contact Me: Marcy Grauer
grauerm@leonschools.net
 (850)921-1265



Behavior

Behavior calendars are in the student binders. I will record any issues on the calendars. Please sign and initial if the calendar square is highlighted. This will help your child to become aware of areas they need more growth in and be able to monitor behavior choices. This will help them to become responsible for their actions at school.

Expectations

Students are expected to follow the KLES school rules.



- Be Respectful
- Be Responsible
- Be Ready to learn



I ask that students show respect to their peers, and to their teachers.

Comments will be written on behavior calendar in their planner if a need arises. Please check the student binders daily for unfinished work and notes sent home.

Our bi-weekly class newsletter will be emailed on Fridays.

- Report Card Behavior / Work Study
- E- Student goes above and beyond what is asked of them in behavior and work study.
 - S- Students satisfactorily demonstrated acceptable behavior and work study skills
 - N- Student has displayed unacceptable progress in behavior and work study areas.